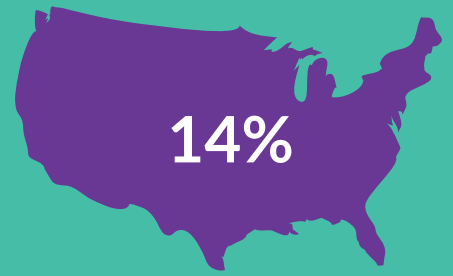


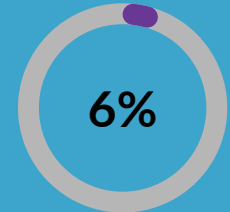
TELEHEALTH IN RURAL CARE SETTINGS



Of the U.S. population lives in rural areas(1)

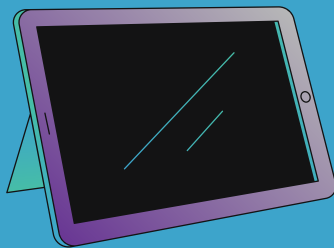


Over 60% primary care shortage areas are in rural areas (2)



Of all OB-GYNs serve rural communities (2)

In 2021, telehealth utilization levels stabilized at 38 times higher than before the pandemic (3)



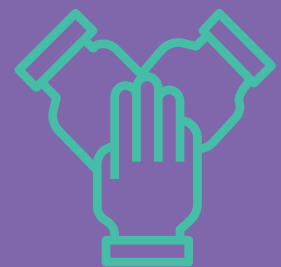
It's estimated that around 42 million Americans lack access to broadband internet (4)

Clinician Challenges

Collaboration



Interoperability



EHR-Agnostic

Real-Time Collaboration

Shared Task List

Learn more at <https://carealign.ai/telehealth-in-rural-care-settings/>

1. <https://www.ers.usda.gov/webdocs/publications/102576/eib-230.pdf?v=4409>

2. <https://www.ruralhealthinfo.org/topics/healthcare-access>

3. <https://www.mckinsey.com/industries/healthcare-systems-and-services/our-insights/telehealth-a-quarter-trillion-dollar-post-covid-19-reality>

4. <https://www.pewtrusts.org/en/research-and-analysis/articles/2022/03/29/states-considering-range-of-options-to-bring-broadband-to-rural-america>

How CareAlign Improves Care in Telehealth and Home Health

Managing chronic conditions

Many home care patients have chronic conditions. CareAlign's shared task list allows providers to create tasks and set reminders to ensure they don't miss anything as they manage these chronic conditions. For example, if a patient needs blood work done every 6 months, providers can set a task for 6 months from now to remind not just themselves, but the entire care team, to follow up and make sure the blood work gets done.

Collaborate with clinicians using different EHRs

Oftentimes, clinicians work in different EHRs making it difficult to collaborate about patients, and forcing them to rely on fax and email to update each other. This is both inefficient and error prone. CareAlign can integrate to multiple different EHRs bringing data into a patient centric view. Additionally, clinicians caring for the same patient can all have access to a shared record in CareAlign so they can work in real time with a shared plan and tasks.

Communicate with others in remote locations

With telehealth and home health, clinicians are often working in different physical locations than the rest of their team, but the team still needs to collaborate. CareAlign works on any internet-enabled device, so while a clinician updates their plan and tasks for a patient during a home visit or in a remote location, they can easily assign those follow ups to other staff members without having to separately message those individuals. With the shared task list, everyone is on the same page without needing to constantly message each other to check in.

Save time searching for data

Patient notes are increasingly long and there is an abundance of data, making it difficult for clinicians to find the most important information when they need it. With time constraints during visits, clinicians can't afford to spend minutes searching for a lab or vital. Using CareAlign, clinicians can see intuitive views of data from multiple different data sources in less than two clicks, allowing them to make informed decisions without delay, and with focus on their patients.

"With CareAlign, we are excited to be able to access patient charts in real-time so collaboration and documentation becomes faster and easier and the possibility of errors is minimized,"

~ John Kosmeh, PhD, president of RemoteMDER.